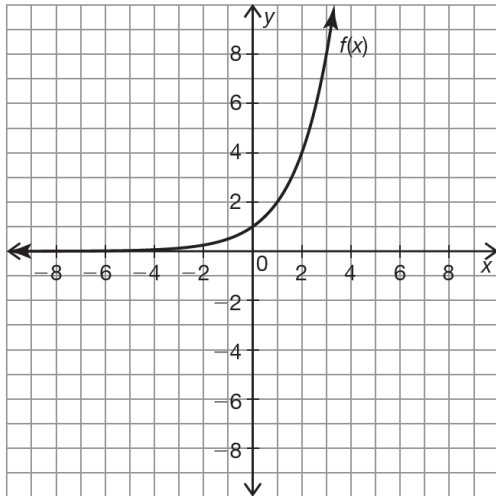


Directions: Graph the transformation and describe each of the transformations.

1. $g(x) = -\frac{1}{2}f(x) + 1$

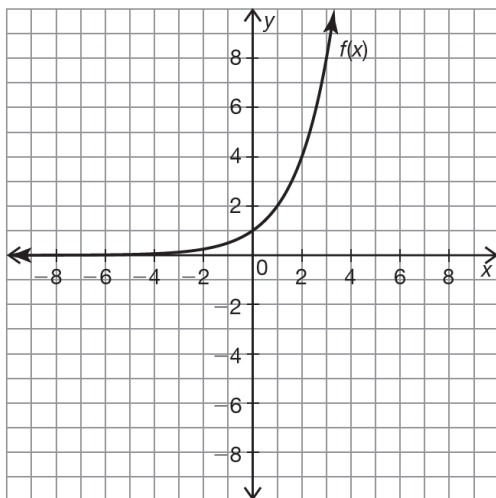


$f(x)$ was _____

_____ to obtain $g(x)$.

Domain	
Range	
Asymptote	
X-Intercept	
Y-Intercept	
End Behavior	
Interval of Increase/Decrease	

2. $n(x) = m(-x + 1) - 2$



$m(x)$ was _____

_____ to obtain $n(x)$.

Domain	
Range	
Asymptote	
X-Intercept	
Y-Intercept	
End Behavior	
Interval of Increase/Decrease	